

# Stan 2



52.15 m<sup>2</sup> |

Suturen |

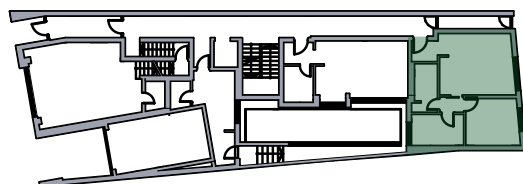
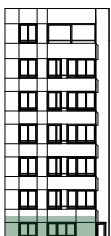
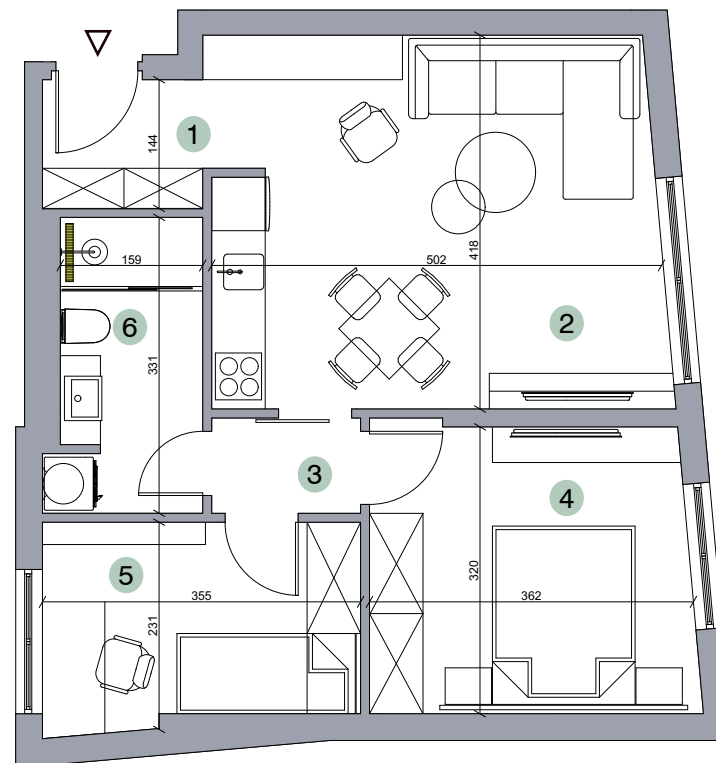
Dvosoban



## PROSTORIJA

## POVRŠINA

1. Ulaz, Hodnik	2.60 m <sup>2</sup>
2. Dnevna soba, kuhinja, trpezarija	22.40 m <sup>2</sup>
3. Degažman	1.80 m <sup>2</sup>
4. Spavaća soba	11.80 m <sup>2</sup>
5. Spavaća soba	8.15 m <sup>2</sup>
6. Kupatilo	5.40 m <sup>2</sup>



Položaj stana u objektu